

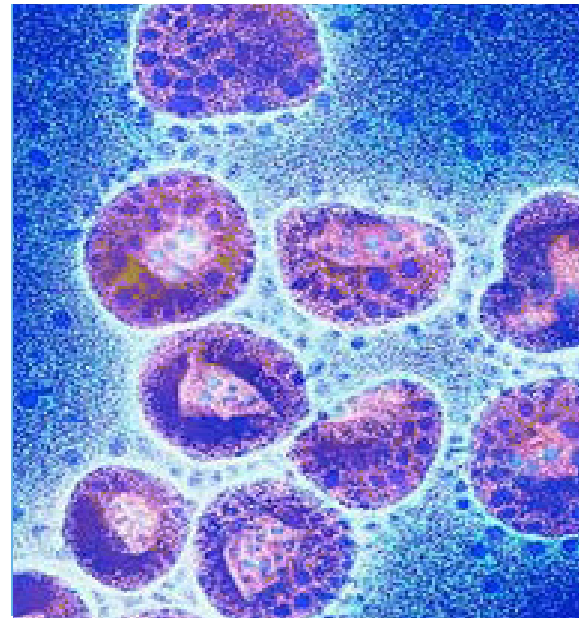
# Rapid RSV Test

QUALITATIVE RAPID IMMUNOCHROMATOGRAPHIC ASSAY



**DIAMONDIAL**  
Diagnostic Mondial Laboratories

- QUALITATIVE RAPID IMMUNO-CHROMATOGRAPHIC ASSAY
- DETECTION OF RSV ANTIGENS IN NASOPHARYNGEAL OR THROAT SAMPLES
- HIGH DEGREE OF SENSITIVITY AND SPECIFICITY



**BIOMEDICA**  

---

**BIOMEDICA**  
**GRUPPE**   
[www.biomedica.co.at](http://www.biomedica.co.at)

# DiaMondial RSV Rapid Tests

THE DIAMONDIAL RAPID RSV TEST IS A QUALITATIVE RAPID IMMUNOCHROMATOGRAPHIC ASSAY FOR DETECTION OF RSV ANTIGENS IN NASOPHARYNGEAL OR THROAT SAMPLES. THE METHOD EMPLOYS A UNIQUE COMBINATION OF MONOCLONAL DYE CONJUGATE AND POLYCLONAL SOLID PHASE ANTIBODIES TO SELECTIVELY IDENTIFY RSV WITH A HIGH DEGREE OF SENSITIVITY AND SPECIFICITY.



## SUMMARY AND EXPLANATION

The respiratory syncytial virus (RSV) which belongs to the Paramyxoviridae family is a highly contagious virus affecting the respiratory tract. It is the most common identified cause of bronchiolitis in infants and small children. Like the other respiratory viruses, RSV causes a range of respiratory illness, from cold with profuse rhinorrhea to pneumonia.

Some cases of infection in infants require hospitalisation, the most severe disease occurring in the first year of life and in those with underlying cardiopulmonary disease.

In infants and children, the virus is shed for 1 to 3 weeks.

Because of its high infectivity and because hospital staff as well as patients are susceptible, RSV has emerged as the most frequent cause of nosocomial infections on pediatric wards.

## PRINCIPLE OF THE TEST

The Rapid RSV test consists in an immunochromatographic assay, it is comprised of a Test line and a Control line.

The method employs a unique combination of monoclonal dye conjugate and polyclonal solid phase antibodies to selectively identify RSV with a high degree of sensitivity and specificity. After collection and treatment, the sample is added to the sample well of the reaction device.

As the test sample flows through the absorbent device, the labelled antibody-dye conjugate binds to the RSV antigen (when present in the sample) forming an antibody antigen complex. This complex binds to the polyclonal antibody in the positive reaction window producing a rose-pink colored band.

In the absence of RSV, there is no line in the Test zone.

The reaction mixture continues flowing through the absorbent device, past the Test Zone zone and Control zone. Unbound conjugate binds to the reagent in the Control zone producing a rose-pink colored band demonstrating that the reagents are functioning correctly.

## COMPOSITION OF THE KIT:

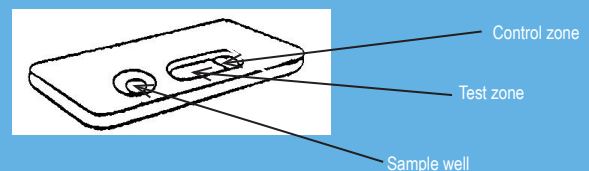
- 20 devices of Rapid RSV test
- 20 disposable plastic droppers
- 1 vial of 11 mL of extraction solution (sodium azide < 0.1 %)

Product	Code	Content
Rapid RSV	DM-DML 6300	20 Tests

## INTERPRETATION OF RESULTS

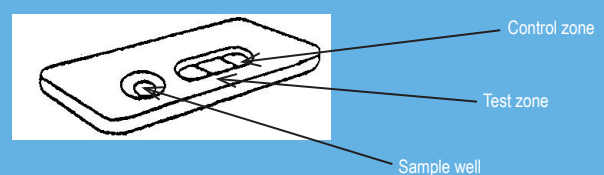
### Negative

Only one coloured line appears in the control zone showing that the test has been carried out correctly. No line in the test zone.



### Positive

In addition to the coloured line in control zone, a clearly distinguishable coloured line also appears in the test zone. The sample contains RSV.



### Inconclusive

If no line appears in the control zone, the test must be repeated.